

Re: Local Government Rates Capping

I have read the submission by the Maribyrnong City Council, (the council), the introduction that portrays the council as wholesome, the discussion on the budget process, and the claim that the council consults with the community, all designed to make a case for increasing rates even further than they already are in real terms.

In its submission that council has stated that it will not be able to maintain infrastructure if capping is limited to CPI. The council has acknowledged that it has been adding a capital works levy at the rate of 2% per annum to council rates since 2006, in addition to CPI increases. The 2% has been cumulative. The initial levy of 2% from 2006 has had 9 years of compounding CPI increases applied to it, as well as 9 years of increasing effect on council rates due to the compounding effect of subsequent 2% capital works levies.

The additional 2% levy added in 2007 would have been added to the levy of 2006 increased by CPI.

The additional 2% levy added in 2008 would have been added to the levy of 2006 increased by 2% plus CPI in respect of year 2008, plus CPI of the year 2007.

The additional 2% levy added in 2009 would have been added to the levy of 2006 increased by 2% plus CPI in respect of year 2009, plus 2% plus CPI in respect of year 2008, plus CPI in respect of year 2007. This ever growing effect on the starting 2% levy of 2006 has continued to 2015.

The levies subsequently imposed in years following 2006 have all been increasing in a similar cumulative compound manner.

Ignoring CPI increases, the cumulative compound effect of the 2% per annum capital works levy, on a starting base rates figure of say \$100 at 2005, results in a rates figure of \$121.90 in 2015. (I repeat, ignoring CPI increases).

This means that on a rate notice of \$2,000 in 2015, an amount of \$359 is due to capital works levies already imbedded in total rates. That is, $(121.9 - 100)/121.9 \times \$2000 = \$359$. This component has not been removed by this council – it wants even more.

If this compounding was allowed to continue for a further 10 years, the cumulative compound effect of the 2% per annum capital works levy results in a figure of \$148.60, (after starting with a figure of \$100 in 2005).

This means that on a rate notice of \$2,000 in 2025, an amount of \$654 would be due to capital works levies. That is, $(148.6 - 100)/148.6 \times \$2000 = \$654$.

CPI increase would simply make the overall situation even worse.

Yet in its submission to the ESC, this council has stated that unless it can keep on adding further 2% annual capital works levies, it will not be able to maintain aging infrastructure. I would suggest that this is at best an admission of administrative failure to control cost and spending.

According to Council's submission, at Point 1, under the heading "The form of the cap", the 2% compounding levy was introduced when "Maribyrnong was at that time listed as the third most disadvantaged community on the SEIFA Index, therefore Council was mindful that the community was not able to bear high rate increases." There is also a reference to a 24 million dollar debt by the council in this point, but no explanation as to how this debt arose. Perhaps it is a leftover from a questionable land deal that occurred many years earlier when the council purchased riverside land at what may have been over inflated prices.

1/2

The council submission claims that the council has attempted to achieve a balance between its budget needs and affordability of rates to ratepayers. Looking and the massive increases to date, and the intended increases in the future, I would suggest that this council has absolutely no regard for affordability of rates to ratepayers. The council has acknowledged in its submission that the area is impoverished, yet it has increased rates to obscene levels. This callous sarcastic claim by the council that it is concerned about the affordability of rates reminds me of saying by the French monarchy prior to the French revolution: "if the peasants can't eat bread, let them eat cake". It also reminds me of the former despot of Romania, Nicolae Ceaucescu, who sent Romania into bankruptcy and impoverished his nation because of his obsession with grandiose buildings.

The council has stated that it consults with the community and engages the community in the budget process. But clearly after consultation and engagement, the council does what it intended from the outset. I was not surprised then to read at the bottom of Point 4, Community engagement, of the council's submission: " This engagement methodology must not be prescribed but be flexible to enable Councils to use their own existing methods and structures for community engagement to suit their communities". The council does not want to be told how to consult and engage the community. Perhaps if this council really did have to engage and consult the community in a prescribed manner, it might then hear the community yelling and screaming that they have had enough of obscene rate increases that are squandered through inefficiencies and spent of dubious capital works. I don't recall this council ever asking the community if it would prefer to have lower rates. A low income earner struggling to pay a mortgage would clearly prefer lower rates than pay for impressive public buildings that might attract tourists.

The spending of this council can be likened to that of a drunken sailor spending someone else's money. For example, in 2008 this council spent \$150,000 to plant 11 trees in metal above ground Pots. This made the front cover of a local paper, the Star, dated Tuesday 4, November 2008, by Charlene Gatt. The article is headed "\$150,000 pot plants". It reads, in part: "Could these be the most over-priced trees in the City of Maribyrnong? The olive trees pictured are two of 11 that were planted along Barkly and Hopkins Streets in September – at a cost of \$150,000. The trees, which stand less than two metres high, have been potted in 'custom made' woven planter baskets as part of Council's Greening Footscray Strategy....." The article also contains a quote from one councillor, then Councillor Rossiter: "I sent an email around to the council officers and the CEO saying 'please tell me we have not spent \$150,000 on pot plants'", followed by "'(It's) no wonder we haven't got any money', she said". This was 2 years after the council began imposing the 2% per annum compounding capital works levies. The \$150,000 equates to \$13,636 per tree. This was the "drive-away" price of a small car at the time (ie., Hyundai Getz).

Now this council wants to spend \$1.4 Million to reconstruct the Nicholson Street Mall, even though there is nothing wrong with it. Reconstruction of the Nicholson Street Mall seems to be happening at substantial cost every few years as a matter of course. Perhaps the mall should simply be scrapped and opened up as a road to cars. This would save millions on future reconstructions of the mall, ease traffic congestion, and provide more parking – and thereby avoid the council spending a proposed \$13.5 on a carpark for 100 cars. But knowing this council, it will select the most expensive choice – reconstruct the mall, and build an expensive carpark, using money provided by the capital works slush fund. No doubt many construction firms would be given lucrative contracts, and to me this suggests brown paper bags stuffed with cash, especially after hearing about FIFA, and recent corruption revelation in the Victorian Education Department.

The mall in Nicholson Street, Footscray, has been in place since 1975, and has clearly cost millions over the years since then in reconstruction after reconstruction. If this council wanted to save money for a change, it could open the mall to traffic as it was pre-1975, thereby easing traffic congestion and creating more car parking spaces.

2/2

Star

Footscray, Yarraville, Braybrook

INCORPORATING WESTERN STAR REAL ESTATE

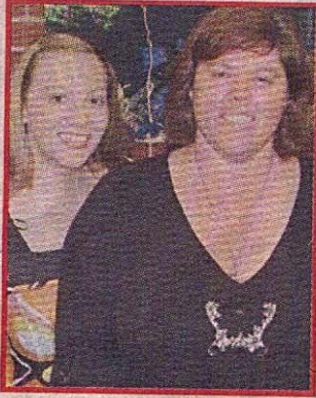
Tuesday 4 November 2008

A Star News Group publication phone: 9933 4800

No 269 50c inc. GST

Money doesn't grow on trees in Maribyrnong, it gets spent on them

Inside



West women make an impact

Page 9



Gone potty ... Maribyrnong City Council and the State Government spent \$150,000 on 11 olive trees along Barkly and Hopkins streets. 24217

Picture: CHARLENE GATT

\$150,000 pot plants

BY CHARLENE GATT

COULD these be the most over-priced trees in the City of Maribyrnong?

The olive trees pictured are two of 11 that were planted along Barkly and Hop-

kins streets in September – at a cost of \$150,000.

The trees, which stand less than two metres high, have each been potted in “custom made” woven planter baskets as part of the council’s Greening Footscray

Strategy. Maribyrnong City Council put \$50,000 towards the project, while the State Government funded the rest.

“They are quite large, they’re quite in your face with the poor, miserable little trees poking out the top of them and of

course they’re very, very good litter receptacles as far as the natives are concerned,” Sheoak Ward councillor Janis Rossiter said.

Continued Page 4



Clash a brutal attack

Sport

Star Real Estate

Your guide to real estate in the West

ROOFMART FOR...

- CHEAP STEEL
- CHEAP POLYCARB
- CHEAP FENCING
- CHEAP GUTTERING
- WHERE?

sales@sunshine.roofmart.com.au
329 St Albans Rd Sunshine
9312 4299

332725-SAH45-8

EASY TERM FINANCE AVAILABLE T.A.P. NO FINANCE APPLICATION REFUSED

**Ballarat Roads – CHEAPEST CARS...
HIGHPOINT MOTORS**

Holden SS Manual
Hurry Don't Miss Out
\$8,999

OVER 120 CARS
Bring in Ad to Get
FREE 12 MTH WARRANTY

Don't Forget Your 12 Month Warranty

WWW.HIGHPOINTMOTORS.COM.AU **LMCT 10026**

Corner Ballarat Road and Rosamond Road **MAIDSTONE** Ph: 9317 5559
Corner Ballarat Road and Gordon Street **FOOTSCRAY** Ph: 9317 5551

EASY TERM FINANCE AVAILABLE T.A.P. NO FINANCE APPLICATION REFUSED 332725-SAH45-8

4 Paws & More
PET SUPPLIES
Up To 30% OFF
Selected Toys Including Kong Airdog

Up To 50% OFF
Selected Leads & Collars Starting from \$2.95

2/60 Keilor Park Drive, Keilor Park (Melways 15 B9)

9331 7869
No Pets Sold.

334464-KS45-8

homy ped **CLEARANCE SALE**
Turn To Page 6 For More Details

HOMYPED Clearance Shop
Trading Hours: 9am - 2:45pm Monday - Saturday. Credit Cards Accepted. EFTPOS Available.
2 Nelson Place, Footscray (Just behind Le Mans Toyota) Mel Ref: 42 E4
Ladies' Dress and Comfort Shoes. Samples, Seconds and Clearance Lines

417005-KS45-8

\$150,000 pot plants a council surprise

From Page 1

"I sent an email around to the council officers and the CEO saying 'please tell me we have not spent \$150,000 on pot plants'."

Cr Rossiter had not received a response to the email at the time Star went to print.

"(It's) no wonder we haven't got any money," she said.

According to the Australian Olive Association, olive trees generally cost between \$5 and \$10 each, depending on their age and source.

Sustainable Development Manager John Luppino said money was also

spent on welded frames, the hand-woven rope exterior, tree planter bags, design and project management costs, on-site installation costs and a two-year maintenance period on the trees and baskets.

"(It) presents a unique way of accommodating and presenting street trees that has added not only more green to Footscray, but also artistic features that align with the artsy, edgy reality of Footscray life, both visually and culturally," Mr Luppino said.

The council's Greening Footscray Strategy is part of an Annual Community Survey request for more "greenness" in Footscray.

Madden still oval man

BY CHARLENE GATT

STATE Planning Minister Justin Madden will remain the responsible authority for the Whitten Oval redevelopment, after a vote in State Parliament last week.

Greens MLC Colleen Hartland moved a motion last Wednesday to hold the Western Bulldogs accountable for "not complying with the (planning) process".

If passed, the motion would have reinstated Maribyrnong City Council as the responsible authority for the \$25 million project.

Ms Hartland said the Bulldogs did not lodge a planning application for the proposed Victoria University (VU) Education Centre until April this year, fully aware that the application would not go to the vote until September.

The permit had been out for public comment and had not been voted on when the State Government over-ruled the council's planning permit processes.

"What I was trying to do was point out that the Bulldogs had not been required by government to go through the standard, democratic process that every other individual and organisation is required to go through and I don't believe that AFL clubs should be exempted from that process," Ms Hartland said.

"I'm not anti-sport, and I'm not anti-Bulldogs.

"It's over now, the project will go ahead, and I hope it goes very well for them."

Ms Hartland said the State Government's hints of a Greens and Liberal Party

push to pass the motion was a "far-fetched" bid to discredit the Greens.

"It was an interesting reaction, I thought it was over-the-top," she said.

Bulldogs CEO Campbell Rose was pleased with the outcome.

"The motion (for Mr Madden to intervene) was clearly supported by all parties other than her, which I think is a reflection that what we're doing is the right thing," Mr Rose said.

"We question her as to why she did it in the first place, because it was to no-one's benefit and wouldn't have achieved any community benefit at all.

"In fact, it would've been destructive to the community outcomes that we're looking (at) - that we are delivering - in the redevelopment."

Community workers launch pay push

BY CHARLENE GATT

COMMUNITY service workers around the West met last week to launch a campaign for more funding and better pay.

The inner west region of the Australian Services Union has kick-started a petition calling for pay parity with the public sector.

Iramoo Youth Refuge worker Charlie Volpe, who has worked in the sector for 30 years, said community service workers were being treated like expendable commodities.

"The well is starting to dry up - we can't retain them, and we can't claim them," Mr Volpe said.

"This is about respect." Campaign organiser Wil Stracke said

about nine per cent less than public service workers at entry level.

The disparity jumps to 100 per cent for some of the more experienced employees.

Ms Stracke said the ASU was also asking employers to show their support for the campaign.

Women's Health West, MetroWest Housing and MacKillop Family Services have already put their hands up.

Similar meetings have been held throughout Victoria.

Groups will reconvene in December after a delegation from each region visits their local MP with a copy of the petition.

Ms Stracke said the union would hold a mass meeting mid-2009 if the Federal Government didn't stand up and take

She has ruled out industrial action.

"This campaign is really about getting the government to put the things that it says about the value of community services into action by funding those wages properly," Ms Stracke said.

"There is genuinely a workforce crisis here and these are workers who may hold degree qualifications and who may have 10 or 15 years' experience in the sector being youth workers or being social workers and working with people with drugs and alcohol issues.

"Our members are like the community safety net, and at the moment that safety net is tearing."

Ms Stracke said the community sector was losing younger employees because of

Wardrobes Kitchens Splashbacks



Imperial Home Products

CALL US TODAY FOR A FREE MEASURE & QUOTE
PHONE: 9363 4955
1/6 WAIGANI AVENUE, RAVENHALL (Deer Park)

394470-CE45-8